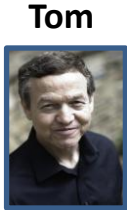


STAGE PLOT - 2014



INSTRUMENTS

Vocals
Mandolin
Bouzouki
Irish Whistle
Electric Bagpipe

INPUTS

Vocal Mic (XLR) **4**
Radial Direct Box (XLR) **8**
(for stringed instruments)
Alesis Pedal (1/4) **10**
(for bagpipe)

AC POWER NEEDED

2 inputs (2 preamps)



INSTRUMENTS

Vocals
Guitar
Bass Pedals

INPUTS

Vocal Mic (XLR) **3**
LR Baggs Para DI (XLR or 1/4) **7**
(for guitar)
Boss Dr. Synth (1/4) **9**
(for bass pedals)

AC POWER NEEDED

2 inputs (inst. Setup)
+ 3 more inputs
(if using our own PA setup)



INSTRUMENTS

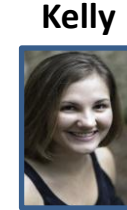
Vocals
Fiddle

INPUTS

Vocal Mic (XLR) **2**
Art Preamp DI (XLR or 1/4) **6**
(for fiddle pickup)

AC POWER NEEDED

1 input (preamp)



INSTRUMENTS

Vocals
Fiddle

INPUTS

Vocal Mic (XLR) **1**
Fiddle Mic (XLR) **5**

POWER NEEDED

**Phantom power from board
(for fiddle mic)



Audience

